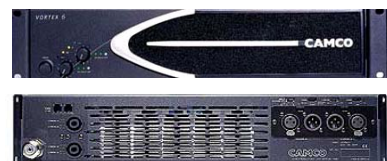


**Professional Price List**

E. & O.E.

**Stock Code Description List Ex Vat**



**Vortex Amplifiers**  
 Ultra lightweight, switch mode (3 stage) amplifiers with innovative protection against under & over voltage plus malfunction. Fully networkable & "digital ready". These amps have an extremely high slew rate due to their current coupled output stages. Output control is via a 12-bit, digital to analogue DCA converter. Thermal stability is ensured via a completely new design optimising airflow & heat dissipation. All Camco products now carry a 6 year manufacturer's warranty (as of January 2006). Confidence or what? Dimensions for all Vortex models - 88.9 x 483 x 420 (mm HWD)

**CA.VORTEX2.6**

- Stereo Power 8 Ohms = 480W / ch
- Stereo Power 4 Ohms = 860W / ch
- Stereo Power 2 Ohms = 1400W / ch
- Bridge Power 8 Ohms = 1720W (mono)
- Bridge Power 4 Ohms = 2800W (mono)
- Output Voltage (peak) @ 8Ω = 90 V
- Net Weight: 11.7 Kg

**£2,205.08**

**CA.VORTEX4**

- Stereo Power 8 Ohms = 930W / ch
- Stereo Power 4 Ohms = 1570W / ch
- Stereo Power 2 Ohms = 2300W / ch
- Bridge Power 8 Ohms = 3140W (mono)
- Bridge Power 4 Ohms = 4600W (mono)
- Output Voltage (peak) @ 8Ω = 130 V
- Net Weight 11.7 Kg

**£2,810.37**

**CA.VORTEX6**

- Stereo Power 8 Ohms = 1350W / ch
- Stereo Power 4 Ohms = 2300W / ch
- Stereo Power 2 Ohms = 3300W / ch
- Bridge Power 8 Ohms = 4600W (mono)
- Bridge Power 4 Ohms = 6600W (mono)
- Output Voltage (peak) @ 8Ω = 150 V
- Net Weight 12 Kg

**£3,601.47**

**CA.VORTEX200V**

- Vortex 200V. 200 Volt internal power supply model specially designed to deliver high power into higher impedance loads.
- Stereo Power 16 Ohms = 1040W / ch
  - Stereo Power 8 Ohms = 1880W / ch
  - Stereo Power 4 Ohms = 3100W / ch
  - Stereo Power 2 Ohms = 2600W / ch
  - Bridge Power 8 Ohms = 6200W (mono)
  - Bridge Power 4 Ohms = 5200W (mono)
  - Output Voltage (peak) @ 8Ω = 130 V
  - Net Weight 12.2 Kg

**£4,180.36**

**CA.ETHERCAI**

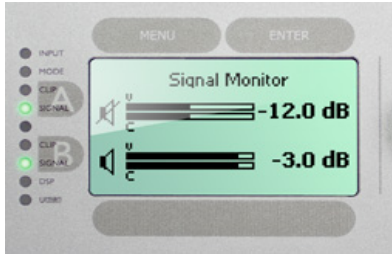
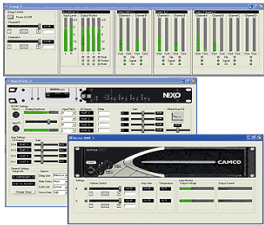
The Ethercai Interface is designed to interface a computer ethernet connection with the RS-485 communication protocol used to communicate with the Vortex range of amplifiers. Using the interface and the proprietary WinCai software (available free of charge) it enables control and monitoring of all amplifiers in the system. Only one of these devices is required for most systems. However, if amplifiers are scattered over a wide area in a venue it may be necessary to add more interfaces to make the system easier to wire up. Multiple devices can co-exist quite happily on the network.

**£454.71**

**CA.UCA-V-AN**

2 channel DSP module for use with either Vortex or Tecton amplifiers. Parametric EQ's, delays, IIR-filters, x-overs & limiters are selected and controlled via the new WinCai remote software. You can also download "parameter sets" from the accredited MF measurement system, designed in conjunction with the Institute for Technical Acoustics in Aachen, Germany. With these measurements loaded onto the module it becomes a full-blown loudspeaker processor that talks directly to the amplifier internals. Fully flexible audio connection via analogue, AES/EBU, Ethersound or Cobranet inputs (specify which on ordering). With a dynamic range of 114dB optimised for Vortex & Tecton amps this is a no compromise solution for high performance sound systems. Audio-Network control requires only one cable via Ethernet 2.

**£782.29**



**WinCai**

This new version of WinCai allows communication between a PC and Camco Vortex amplifiers and also communicates with the Nexo NX241/NX242 Digital Processors. Control and monitoring of the Vortex or Tecton range is now possible in a more user-friendly format than the old WinCai software. Compatible with Win2000 and WinXP, the PC communicates with the "EtherCai" interface at ethernet level and the interface translates the protocol to RS-485 for direct connection to the amplifiers. Remote monitoring of compatible devices is also possible.

**FOC**

**Vortex 'Silver Series' Amplifiers**

The evolution of technology, its application and the resulting real world solutions are at the heart of every Camco product. With the introduction of the new "Silver Series V8" Camco are once again pushing the boundaries of power, performance, sonic integrity and integration. A key part of the new V8 design is the absence of any control knobs or switches, front or back. Control of all parameters is via the screen user interface and gain slider. This clean, practical approach reduces wear & tear factors on moving parts while delivering a forward thinking approach to function, safety and plain good looks.

**CA.VORTEX8**

- Vortex 8 Specifications:
- Stereo Power 8 Ohms = 2000W / ch
  - Stereo Power 4 Ohms = 3450W / ch
  - Stereo Power 2 Ohms = 3750W / ch
  - Bridge Power 8 Ohms = 6900W
  - Bridge Power 4 Ohms = 7500W
  - Output Voltage (peak) @ 8Ω = 200 V
  - Net Weight 13 Kg

**£4,595.95**

**CA.VORTEX8-DSP**

Optional DSP network card to fit Vortex 8

**£200.00**

**Q Power Amplifiers**

The Camco Q-Power Series is a new range of 4 channel, high output power amplifiers. There are three models in the Series, the Q-Power 4, Q-Power 6 and Q-Power 10, all of them 19" 2RU amps using class D and class H technology and benefitting from developments in CAMCO's proprietary dual-voltage SMPS with automatic voltage selection for 120V/230V operation. Suitable for live sound and theatre applications, the Q-Power will quickly find favour with professional installers who will find these units flexible and cost-effective.

**CA.Q4**

1000W per channel at 4 Ohms  
660W per channel at 8 Ohms

**£2,038.84**

**CA.Q6**

1000W per channel at 4 Ohms  
800W per channel at 8 Ohms

**£3,021.59**

**CA.Q10**

1800W per channel at 4 Ohms  
1100W per channel at 8 Ohms

**£4,028.79**

**D Power Amplifiers**

Following on from the Q-Power series, the new D-Power series develops the range further with three 2 channel models. Each model has been designed to provide that powerful pure sonic performance which is now so synonymous with the CAMCO brand name. They utilise a Hybrid Class H amplifier engine, offering smooth and responsive handling throughout the power range. All models benefit from the latest advances in CAMCO's SMPS technology and the resulting lightweight units are at home in all professional applications. Used in combination with the Q-Power series or on their own, the D-Power series delivers pure and reliable power for applications where cost and ease of use are paramount without loss of integrity.



<b>CA.D2</b>	1216W per channel at 4 Ohms 698W per channel at 8 Ohms	<b>£1,248.73</b>
<b>CA.D3</b>	1600W per channel at 4 Ohms 918W per channel at 8 Ohms	<b>£1,440.39</b>
<b>CA.D4</b>	1900W per channel at 4 Ohms 1123W per channel at 8 Ohms	<b>£1,622.27</b>

**Tecton Amplifiers**

6 models, optimised for 2 or 4 ohm operation. Features Include: Highly efficient SMPS (switched mode power supply). LED indicators for operation mode, clip, signal & output current. Selectable clip limiter & subsonic filter. Input sensitivity selectable to 26dB, 32dB or 1.4v. Output current monitoring. Networkable. 6 year warranty. Dimensions for all Tecton models: 483 x 88.9 x 340 (mm WHD)

**.2 Series - Optimised for 2Ω**

<b>CA.TECTON14.2</b>	<ul style="list-style-type: none"> <li>■ Stereo Power 8 Ohms = 226W / ch</li> <li>■ Stereo Power 4 Ohms = 420W / ch</li> <li>■ Stereo Power 2 Ohms = 730W / ch</li> <li>■ Bridge Power 8 Ohms = 840W (mono)</li> <li>■ Bridge Power 4 Ohms = 1460W (mono)</li> <li>■ Parallel Mono 1 Ohm = 1460W (mono)</li> <li>■ Net Weight: 9.4 Kg</li> </ul>	<b>£1,269.26</b>
----------------------	--	------------------

<b>CA.TECTON22.2</b>	<ul style="list-style-type: none"> <li>■ Stereo Power 8 Ohms = 355W / ch</li> <li>■ Stereo Power 4 Ohms = 660W / ch</li> <li>■ Stereo Power 2 Ohms = 1140W / ch</li> <li>■ Bridge Power 8 Ohms = 1320W (mono)</li> <li>■ Bridge Power 4 Ohms = 2280W (mono)</li> <li>■ Parallel Mono 1 Ohm = 2280W (mono)</li> <li>■ Net Weight: 9.4 Kg</li> </ul>	<b>£1,530.35</b>
----------------------	--	------------------

<b>CA.TECTON28.2</b>	<ul style="list-style-type: none"> <li>■ Stereo Power 8 Ohms = 517W / ch</li> <li>■ Stereo Power 4 Ohms = 920W / ch</li> <li>■ Stereo Power 2 Ohms = 1420W / ch</li> <li>■ Bridge Power 8 Ohms = 1840W (mono)</li> <li>■ Bridge Power 4 Ohms = 2840W (mono)</li> <li>■ Parallel Mono 1 Ohm = 2840W (mono)</li> <li>■ Net Weight: 9.4 Kg</li> </ul>	<b>£1,782.64</b>
----------------------	--	------------------

**.4 Series - Optimised for 4Ω**

<b>CA.TECTON24.4</b>	<ul style="list-style-type: none"> <li>■ Stereo Power 8 Ohms = 698W / ch</li> <li>■ Stereo Power 4 Ohms = 1216W / ch</li> <li>■ Stereo Power 2 Ohms = 1600W / ch</li> <li>■ Bridge Power 8 Ohms = 2432W (mono)</li> <li>■ Bridge Power 4 Ohms = 3200W (mono)</li> <li>■ Parallel Mono 1 Ohm = 3200W (mono)</li> <li>■ Net Weight: 9.4 Kg</li> </ul>	<b>£1,782.64</b>
----------------------	---	------------------

<b>CA.TECTON32.4</b>	<ul style="list-style-type: none"> <li>■ Stereo Power 8 Ohms = 918W / ch</li> <li>■ Stereo Power 4 Ohms = 1595W / ch</li> <li>■ Stereo Power 2 Ohms = 1600W / ch</li> <li>■ Bridge Power 8 Ohms = 3190W (mono)</li> <li>■ Bridge Power 4 Ohms = 3200W (mono)</li> <li>■ Parallel Mono 1 Ohm = 3200W (mono)</li> <li>■ Net Weight: 9.4 Kg</li> </ul>	<b>£2,043.73</b>
----------------------	---	------------------

<b>CA.TECTON38.4</b>	<ul style="list-style-type: none"> <li>■ Stereo Power 8 Ohms = 1136W / ch</li> <li>■ Stereo Power 4 Ohms = 1900W / ch</li> <li>■ Stereo Power 2 Ohms = 1500W / ch</li> <li>■ Bridge Power 8 Ohms = 2272W (mono)</li> <li>■ Bridge Power 4 Ohms = 3800W (mono)</li> <li>■ Parallel Mono 1 Ohm = 3000W (mono)</li> <li>■ Net Weight: 9.4 Kg</li> </ul>	<b>£2,306.78</b>
----------------------	--	------------------