

AUDACE INTELLIPLATE

APPLICATIONS NOTE #6



Configuring Intelliplate for use with the Symnet™ *[requires V2.10 or higher PanelWare software]*



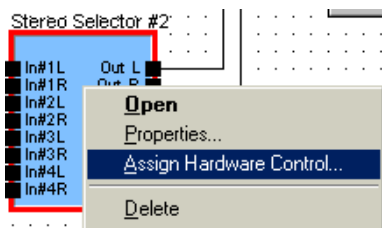
Introductory Comments

Note that this information sheet assumes a reasonable level of familiarity with the Symnet™ processor. These notes are intended as a supplement to documentation provided by Symetrix for that product and should be read in conjunction with that documentation. This version of the sheet was written based on a Symetrix system running Version 1.13 software.

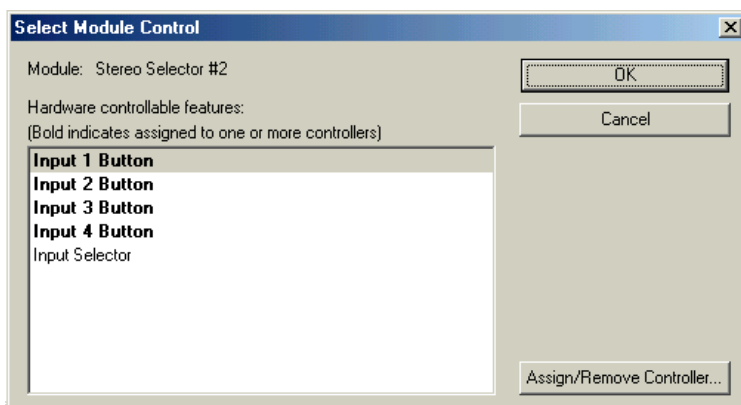
The Intelliplate system Hub should be connected to the rear-panel D connector of the Symnet™ and a PC may be connected to the front panel of the Symnet™. If F5 is selected in Symnet designer at the conclusion of this process, you can see the effect of pressing Intelliplate buttons, or turning knobs, on the audio system and verify your design.

Configuring Symnet™

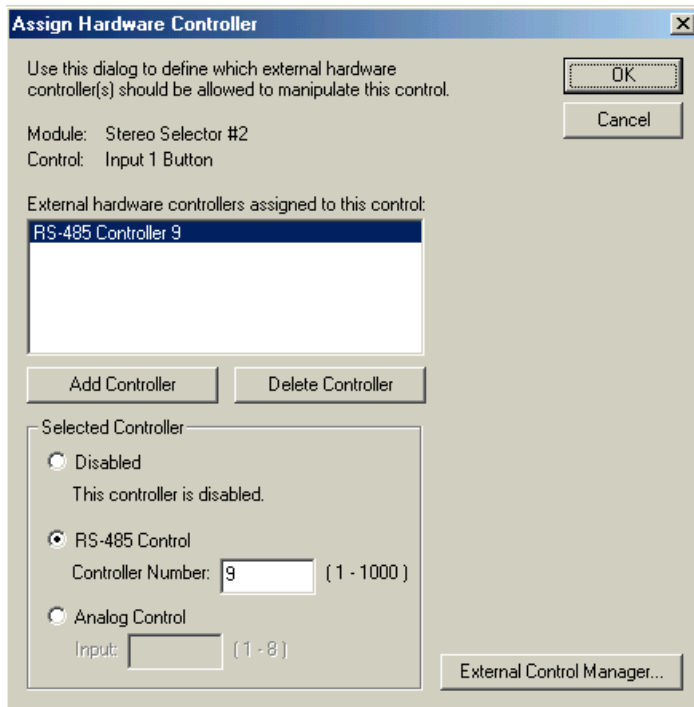
The Symnet™ is configured using the Symnet Designer Windows™ software. The only special action that needs to be carried out is to ensure that all those elements which you intend to control with Intelliplate are assigned to Hardware Control. This is done by right-clicking on the device in Symnet Designer and selecting Assign Hardware Control:



You will then be presented with the Select Module Control dialogue box as shown below:



Simply select the parameter that you wish to assign to Intelliplate control and click on the Assign/Remove Controller button. You will then see the Assign Hardware Controller window:



Click Add Controller and then select the RS-485 control radio button. The software will then assign the controller a Controller Number, which you should take note of, since you will require these during the Intelliplate configuration.

You can review all your Controller Numbers at the end of the design project by selecting External Control Manager under the Tools menu.

Note that if you want to use the dedicated Mute function in Intelliplate for channel which are being controlled by a rotary, you will need to assign the Mute Controller Number to be 100 more than the corresponding fader. You can see examples of this in the sample configuration files mentioned.

Configuring Intelliplate

Configuring the Intelliplate system to work with the Symnet is simply a case of selecting Symnet on the Hub page of the PanelWare interface and then assigning button and rotary control functions according to the Controller Numbers that you have created in Symnet Designer.

Note that if you want to assign Intelliplate buttons as Mute controls for the corresponding fader, you will need to ensure that in Symnet Designer, the Controller Numbers of the mute buttons are 100 more than the corresponding faders.

Note that using Intelliplate buttons to toggle matrix crosspoints on and off is not possible. You will need to use input selectors to perform operations like paging. Examples can be seen on the Intelliplate web site.

Note that a series of free sample configuration files for Symnet, along with accompanying PanelWare configurations, are available on the Intelliplate web site for download –www.intelliplate.com